

COLUMBIA

CRT AND VRT SYSTEMS

BOILER FEED SYSTEMS



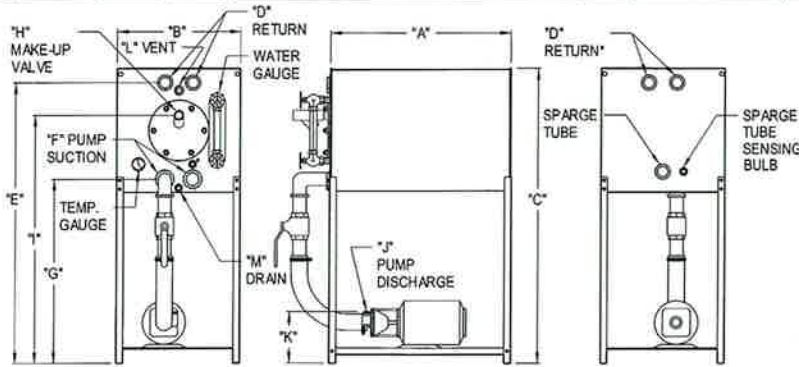
The Columbia CRT and VRT feed tanks feature heavy gauge steel construction that provides ample feedwater storage capacity; a float operated make-up valve that automatically admits new water to replace that lost through steam not returned to tank; a strainer to prevent foreign material from entering make-up valve; a high suction pipe to prevent sediment from entering pump, increasing life of pump impeller and raceway; provisions for thermometer and sparge tubes; water level gauge; and a turbine pump driven by heavy duty drip proof motor operated by boiler water level control that feeds boiler automatically.

You can do BETTER with Columbia
GOOD people. BETTER Boilers. BEST value.

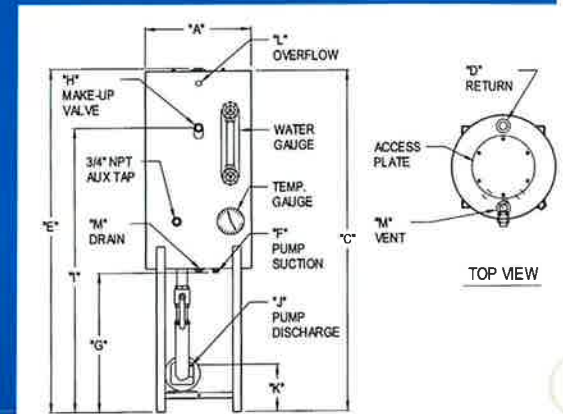
SPECIFICATIONS AND DATA

CRT Specifications

| MODEL | BOILER HP | DIS-CHAR. PRES. | TANK SIZE (GAL) | PUMP DATA | A | B | C | D | E | F | G | H | I | J | K | L | M | SHIPPING WEIGHT |
|--------|-----------|-----------------|-----------------|-----------------------------|--------|--------|--------|---------------|--------|---------------|--------|---------|--------|-------|--------|-------|---------|-----------------|
| CRT-1 | 1-10 | 150 | 22 | T41D-BF - .50 HP, 1/60/3450 | 30 | 15 1/2 | 37 1/4 | (2) 1 1/2 NPT | 35 | (2) 1 1/2 NPT | 24 1/2 | 1/2 | 31 1/2 | 1 | 9 1/2 | 3/4 | 3/4 | 210 |
| CRT-2 | 15-20 | 150 | 22 | T41E-BF - .75 HP, 1/60/3450 | 30 | 15 1/2 | 37 1/4 | (2) 1 1/2 NPT | 35 | (2) 1 1/2 NPT | 24 1/2 | 1/2 | 31 1/2 | 1 | 9 1/2 | 3/4 | 3/4 | 212 |
| CRT-3 | 25-30 | 150 | 50 | T41E-BF - .75 HP, 1/60/3450 | 36 1/2 | 20 1/2 | 42 1/4 | (2) 1 1/2 NPT | 39 3/4 | (2) 1 1/2 NPT | 24 1/2 | 1/2 | 33 3/4 | 1 | 9 1/2 | 3/4 | 3/4 | 285 |
| CRT-4 | 40 | 150 | 50 | T51E-BF - 1.5 HP, 3/60/3450 | 36 1/2 | 20 1/2 | 42 1/4 | (2) 1 1/2 NPT | 39 3/4 | (2) 1 1/2 NPT | 24 1/2 | 1/2 | 33 3/4 | 1 | 10 1/4 | 3/4 | 3/4 | 308 |
| CRT-5 | 50-60 | 150 | 50 | T51G-BF - 2.0 HP, 3/60/3450 | 36 1/2 | 20 1/2 | 42 1/4 | (2) 1 1/2 NPT | 39 3/4 | (2) 1 1/2 NPT | 24 1/2 | 1/2 | 33 3/4 | 1 | 10 1/4 | 3/4 | 3/4 | 313 |
| CRT-6 | 70-100 | 150 | 100 | T51P-BF - 5.0 HP, 3/60/3450 | 48 | 24 1/2 | 46 1/2 | (4) 1 1/2 NPT | 43 | (4) 1 1/2 NPT | 24 1/2 | (1) 3/4 | 35 3/4 | 1 | 10 1/4 | (2) 1 | (2) 3/4 | 390 |
| CRT-7 | 1-20 | 15 | 22 | C41AB - .33 HP, 1/60/3450 | 30 | 15 1/2 | 37 1/4 | (2) 1 1/2 NPT | 45 | (2) 1 1/2 NPT | 24 1/2 | 1/2 | 31 1/2 | 3/4 | 13 | 3/4 | 3/4 | 210 |
| CRT-8 | 25-60 | 15 | 50 | C41CD - .50 HP, 1/60/3450 | 36 1/2 | 20 1/2 | 42 1/4 | (2) 1 1/2 NPT | 39 3/4 | (2) 1 1/2 NPT | 24 1/2 | 1/2 | 33 3/4 | 1 1/4 | 13 | 3/4 | 3/4 | 285 |
| CRT-9 | 70-100 | 15 | 100 | C41CD - .50 HP, 1/60/3450 | 48 | 24 1/2 | 46 1/2 | (4) 1 1/2 NPT | 43 | (4) 1 1/2 NPT | 24 1/2 | (1) 3/4 | 35 3/4 | 1 1/4 | 13 | (2) 1 | (2) 3/4 | 425 |
| CRT-10 | 125 | 150 | 150 | T51P-BF - 5.0 HP, 3/60/3450 | 56 1/2 | 28 3/4 | 50 1/4 | (4) 2 NPT | 47 | (2) 2 1/2 NPT | 24 3/4 | (1) 3/4 | 36 | 2 | 16 1/2 | (2) 1 | (2) 3/4 | 775 |
| CRT-11 | 150 | 150 | 150 | T51P-BF - 5.0 HP, 3/60/3450 | 56 1/2 | 28 3/4 | 50 1/4 | (4) 2 NPT | 47 | (2) 2 1/2 NPT | 24 3/4 | (1) 3/4 | 36 | 2 | 16 1/2 | (2) 1 | (2) 3/4 | 810 |
| CRT-12 | 175 | 150 | 200 | T51P-BF - 5.0 HP, 3/60/3450 | 57 3/4 | 33 1/4 | 54 3/4 | (4) 2 NPT | 51 | (2) 2 1/2 NPT | 25 | (1) 3/4 | 38 1/4 | 2 | 16 1/2 | (2) 1 | (2) 3/4 | 910 |
| CRT-13 | 200 | 150 | 200 | T51P-BF - 7.5 HP, 3/60/3450 | 57 3/4 | 33 1/4 | 54 3/4 | (4) 2 NPT | 51 | (2) 2 1/2 NPT | 25 | (1) 3/4 | 38 1/4 | 2 | 17 1/2 | (2) 1 | (2) 3/4 | 1015 |



* ON 100 GAL. AND LARGER, TANKS.



VRT Specifications

| MODEL | BOILER HP | DIS-CHAR. PRES. | TANK SIZE (GAL) | PUMP DATA | A | B | C | D | E | F | G | H | I | J | K | L | M | SHIPPING WEIGHT |
|-------|-----------|-----------------|-----------------|-----------------------------|----|-----|----|---------------|--------|---------------|----|-----|--------|-------|--------|-----|-------|-----------------|
| VRT-1 | 1-10 | 150 | 30 | T41D-BF - .50 HP, 1/60/3450 | 20 | N/A | 50 | (1) 1 1/2 NPT | 50 1/2 | (2) 1 1/2 NPT | 25 | 1/2 | 43 3/4 | 1 | 9 1/2 | 3/4 | 1 1/4 | 190 |
| VRT-2 | 15-25 | 150 | 30 | T41E-BF - .75 HP, 1/60/3450 | 20 | N/A | 50 | (1) 1 1/2 NPT | 50 1/2 | (2) 1 1/2 NPT | 25 | 1/2 | 43 3/4 | 1 | 9 1/2 | 3/4 | 1 1/4 | 190 |
| VRT-3 | 30 | 150 | 45 | T41E-BF - .75 HP, 1/60/3450 | 20 | N/A | 62 | (1) 1 1/2 NPT | 62 1/2 | (2) 1 1/2 NPT | 25 | 1/2 | 51 1/4 | 1 | 9 1/2 | 3/4 | 1 1/4 | 225 |
| VRT-4 | 35/40 | 150 | 45 | T51E-BF - 1.5 HP, 3/60/3450 | 20 | N/A | 62 | (1) 1 1/2 NPT | 62 1/2 | (2) 1 1/2 NPT | 25 | 1/2 | 51 1/4 | 1 | 10 1/4 | 3/4 | 1 1/4 | 250 |
| VRT-7 | 1-25 | 15 | 30 | C41AB - .33 HP, 1/60/3450 | 20 | N/A | 50 | (1) 1 1/2 NPT | 50 1/2 | (2) 1 1/2 NPT | 25 | 1/2 | 43 3/4 | 3/4 | 13 | 3/4 | 1 1/4 | 195 |
| VRT-8 | 26-60 | 15 | 45 | C41CD - .50 HP, 1/60/3450 | 20 | N/A | 62 | (1) 1 1/2 NPT | 62 1/2 | (2) 1 1/2 NPT | 25 | 1/2 | 51 1/4 | 1 1/4 | 13 | 3/4 | 1 1/4 | 225 |

FEED SYSTEM OPTION EQUIPMENT

| | |
|--|--------------|
| 1/2" Sparge Tube with 1 1/4" Double Tapped Bushing (VRT) | Item #900995 |
| 3/4" Sparge Tube with 1 1/4" Double Tapped Bushing (CRT) | Item #900990 |
| Motor Contactor 1/2 or 3/4 H.P. - 115/240/1 | Item #890096 |
| Motor Starter 1/2 or 3/4 H.P. - 115/240/1 | Item #890090 |
| Motor Starter 1 to 5 H.P. - 208/220/440/3 | Item #890095 |
| Temperature Gauge | Item #930730 |
| Automatic Steam Tempering Valve for Sparge, 1/2" | Item #578210 |
| Strainer for Tempering Valve | Item #901705 |
| Hard Piping 1" | Item #964000 |
| Hard Piping 1 1/4" | Item #964002 |



Manufactured in USA by
COLUMBIA BOILER COMPANY
 P.O. Box 1070, Pottstown, PA 19464
 (610) 323-2700 FAX (610) 323-7292
 www.columbiaboiler.com email: cbcsales@columbiaboiler.com